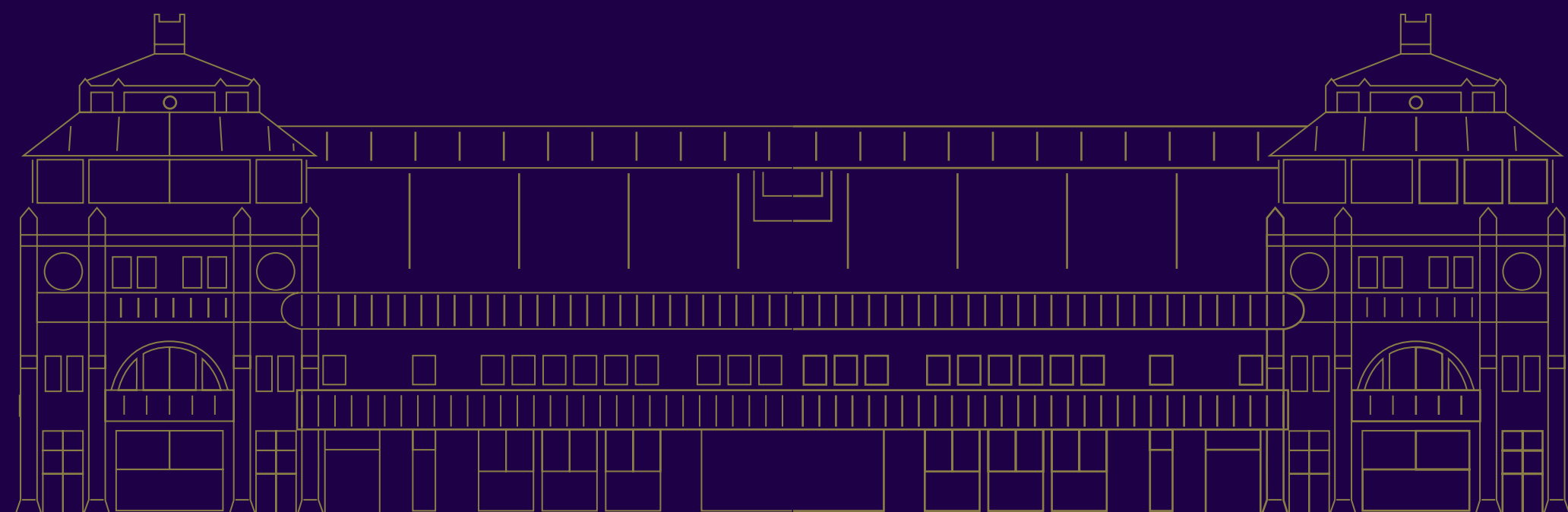




EVENTS & EXPERIENCES

AT THE HOME OF CRICKET



EXPERIENCE THE MAGIC OF LORD'S

The most famous cricket ground in the world,
Lord's is steeped in history and charm.

From the old-world elegance of the Grade II*-listed Pavilion
to the cutting-edge modernity of the J.P. Morgan
Media Centre, and the state-of-the-art Compton
and Edrich suites - Lord's is an exceptional venue to
host any kind of event.

Our award-winning in-house catering, and a central location
only one stop from Baker Street, mean that Lord's may
be your perfect venue.



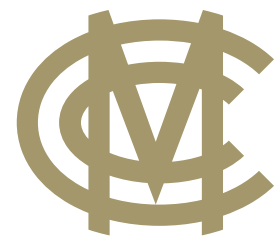
THE FACTS

1814 We've been here for over **200 years**.

Home to the world's oldest sporting museum and the famous **Ashes Urn**.



The **famous Honours Boards** in the Players' Dressing Rooms provide a permanent reminder of the best cricketing performances in the long history of Lord's.

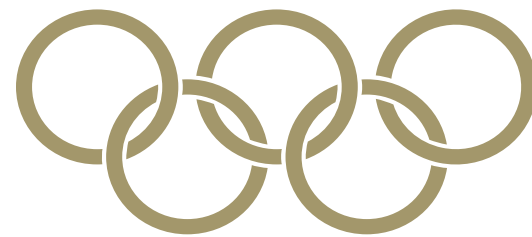


Lord's hosts **MCC, Middlesex, England, Sunrisers and London Spirit** fixtures alongside being a world-class event space.

HOTEL

Local Hotels nearby for all event needs - **Danubius Hotel, Dorset Square Hotel** (situated on the site of the original Lord's Cricket Ground in Marylebone), **the Prince Aktoki Hotel by Marble Arch**.

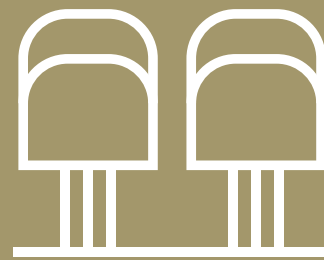
Major venue for Archery during the **London 2012 Olympics**.



The scene of the famous England Men's World Cup super over victory in **2019**, and England Women's **1993** and **2017** World Cup Final wins alongside being a remarkable event space.



RENOWNED AS
THE HOME OF CRICKET



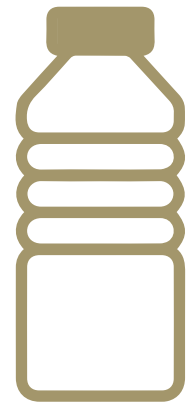
TOTAL CAPACITY OF 31,144
— THE LARGEST CRICKET
GROUND IN THE UK



THE BIRTHPLACE OF THE
WOMEN'S ASHES



LORD'S SUSTAINABILITY



In 2019, there were **two million** fewer pieces of single use plastic.



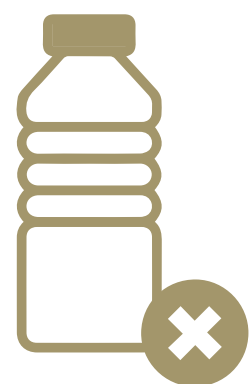
Compton's and Pelham's both **feature living walls** which boosts biodiversity by supporting thousands of different species of plant and wildlife.

New event spaces, Compton's and The Edrich were designed to the high sustainability standards of the London Plan and **achieved BREEAM Very Good status.**

BREEAM[®]

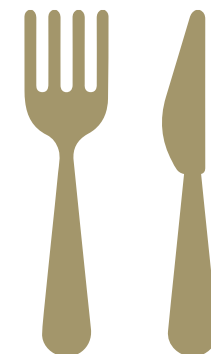


To control and schedule heating, cooling and energy **down to a single plug socket**, building management systems have been introduced to both the Compton and Edrich stands.

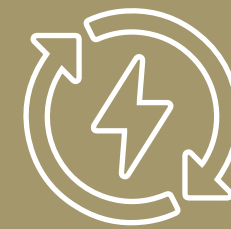


Zero waste at Lord's goes to a landfill.

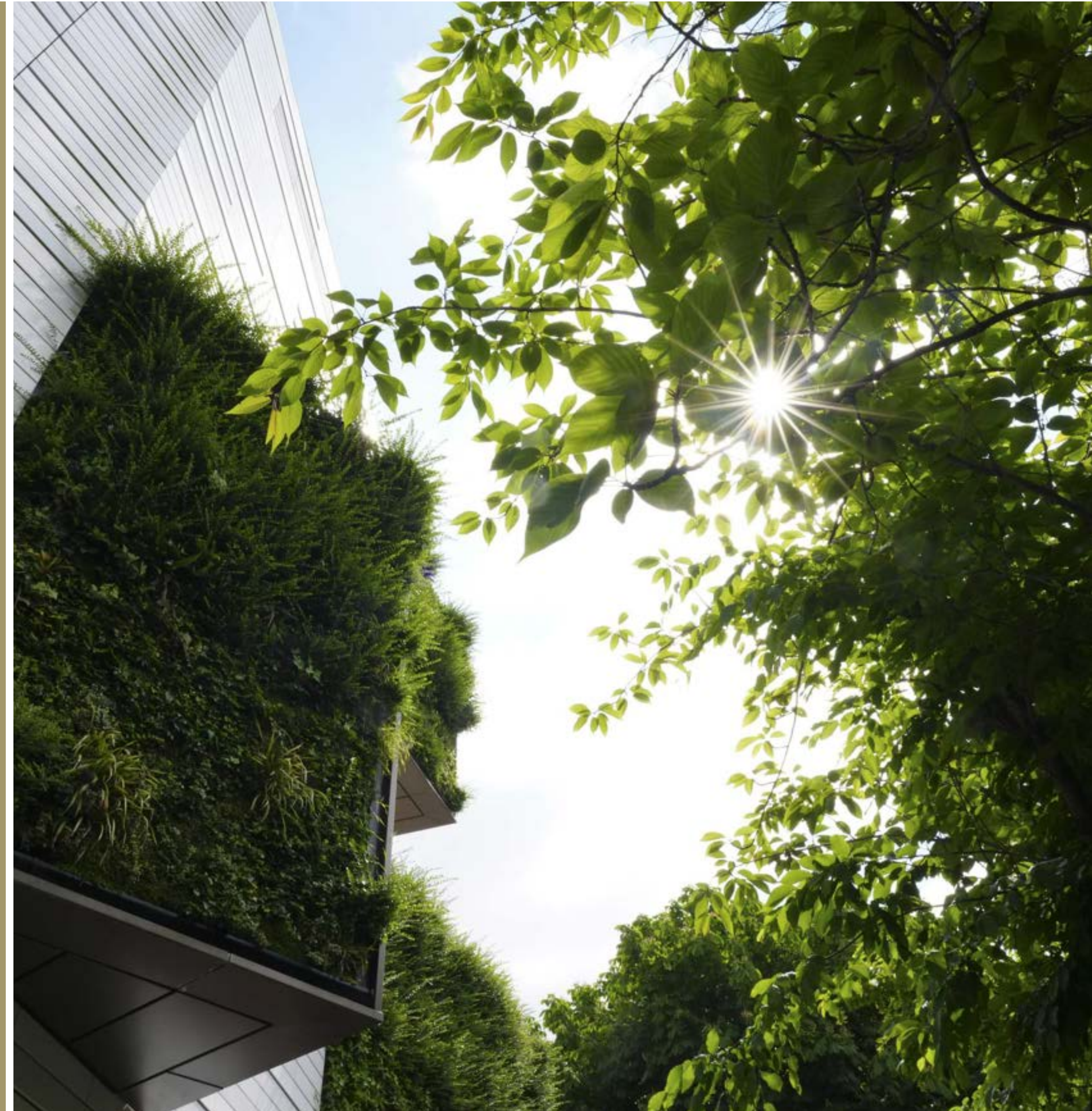
The Events team work closely with the on-site Catering team to create **seasonal sustainable menus.**



36% REDUCTION IN CONSUMPTION OF WATER, 34% DECREASE IN THE USE OF GAS IN RECENT YEARS



THE ENTIRETY OF THE LORD'S ESTATE RUNS ON 100% RENEWABLE ELECTRICITY



YOUR EVENT YOUR WAY

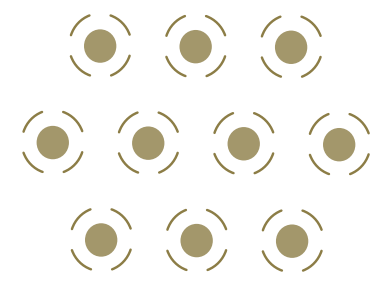
From intimate meetings for two guests, to large receptions for 900 delegates, we have the space for you.

With plenty of flexible meeting rooms, a stunning grade II*-listed Pavilion with beautiful dining spaces, extensive conferencing spaces and exquisite wedding venues, we can assist you in planning the perfect event.



CAPACITIES

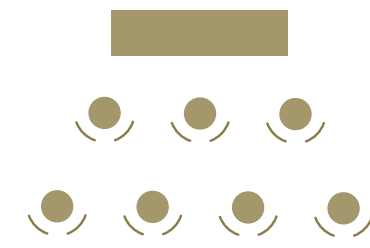
SEATED



THEATRE STYLE



CABARET



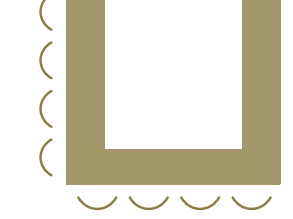
BOARDROOM



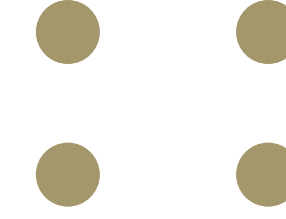
CLASSROOM



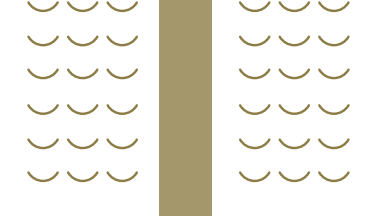
U-SHAPE



DRINKS RECEPTION



CEREMONY



CAPACITIES	SEATED MEAL	THEATRE STYLE	CABARET	BOARDROOM	CLASSROOM	U-SHAPE	DRINKS RECEPTION	WEDDING CEREMONY
LONG ROOM	200	-	-	-	-	-	300	230
PAVILION ROOF TERRACE	-	-	-	-	-	-	200	-
WRITING ROOM	60	45	32	18	-	26	70	60
COMMITTEE DINING ROOM	54	64	48	26	-	32	70	-
MUSEUM AND COMMUNITY GALLERY	-	35	-	-	-	-	200	-
THOMAS LORD SUITE	250	300	160	58	126	-	450	300
NURSERY PAVILION	550	600	400	-	324	-	900	-
J.P. MORGAN MEDIA CENTRE	60	-	-	-	70	-	100	-
TAVERN SUITES	-	30	16	16	-	-	-	-
CENTURIONS ROOF TERRACE	-	-	-	-	-	-	350	-
HARRIS GARDEN	-	-	-	-	-	-	200	-
PLAYERS' DRESSING ROOM	12	-	-	-	-	-	40	-
PRESIDENT'S SUITE	48	-	-	-	-	-	50	-
TWO SEVEN EIGHT SUITE	80	102	56	-	-	-	130	-
PELHAM'S	136	136	88	-	66	-	169	-
COMPTON'S	80	-	-	-	-	-	130	-
THE EDRICH	60	-	-	-	-	-	-	-

**EVENT SPACES
AT LORD'S**

THE PAVILION

The Lord's Pavilion was designed by architect Thomas Verity and built over the winter of 1889-1890. Renowned in the cricketing world as an icon of historic and modern cricket, we now offer this Grade II*-listed building as superb event space. At its heart lies the famous Long Room, 93 feet in length, which offers a magnificent view of the playing area through which players pass as they make their way onto the pitch.

The walk out through the Long Room from the Dressing Rooms on the first floor must be the most famous walk in cricket.

Alongside the Long Room, lies the elegantly furnished Writing Room suitable for intimate receptions, dinners and weddings.

Moving onto the top floor, The Committee Dining Room is rife with history, making it the perfect venue for an intimate dining experience.

Finally, the impressive Pavilion Roof Terrace offers fantastic, elevated views of the main Ground and the surrounding St John's Wood area.



VISITORS

WEST INDIES	138
NEW ZEALAND	145
INDIA	184
INDIA	112
WEST INDIES	117
WEST INDIES	157
AUSTRALIA	200
AUSTRALIA	214*
INDIA	190
PAKISTAN	111
WEST INDIES	102*
SRI LANKA	26
LANKA	

2010	T. DR
2010	R. DR
2011	H.M. AM
2012	K.C. SANGA
2014	A.D. MATH
2015	A.M. RAHANE
	K.S. WILLIAMSON
	C.J.L. ROGERS
	S.P.D. SMITH
	MISBAH-UL-HAQ
2016	D.P. CONWAY
2021	K.L. RAHUL
2022	D.J. MITCHELL

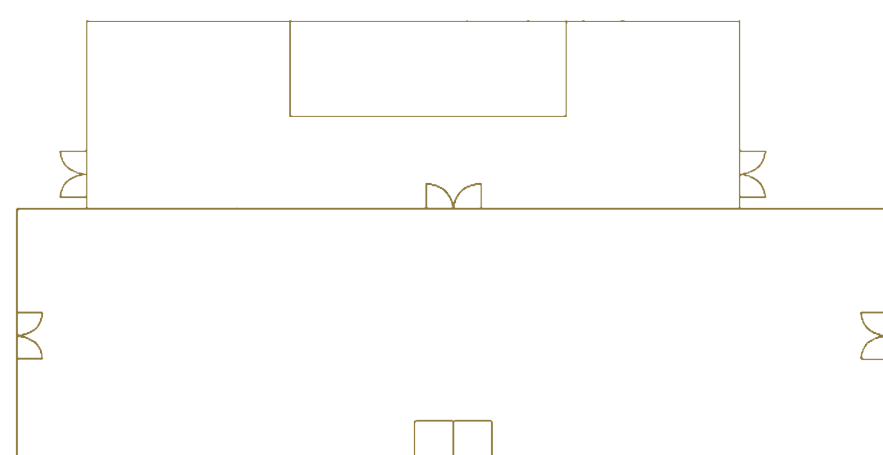
LONG ROOM & LONG ROOM BAR

The prestige of one of the sports world's most celebrated interiors will enhance any lunch, dinner or reception.

The Long Room, which houses some of the finest paintings in MCC's impressive collection, is at the heart of cricket's grandest clubhouse.

Your guests can enjoy an ambiance steeped in the history of the game, though they don't have to be cricket enthusiasts for this Grade II*-listed building to give them a lasting impression of elegance.

The Long Room is an opulent setting for a dinner or luncheon. The adjoining Long Room Bar is an ideal space for your pre-lunch or dinner drinks reception.



28M X 8M

CAPACITY

SEATED MEAL 200

LONG OVAL TABLE 82

RECEPTION 300

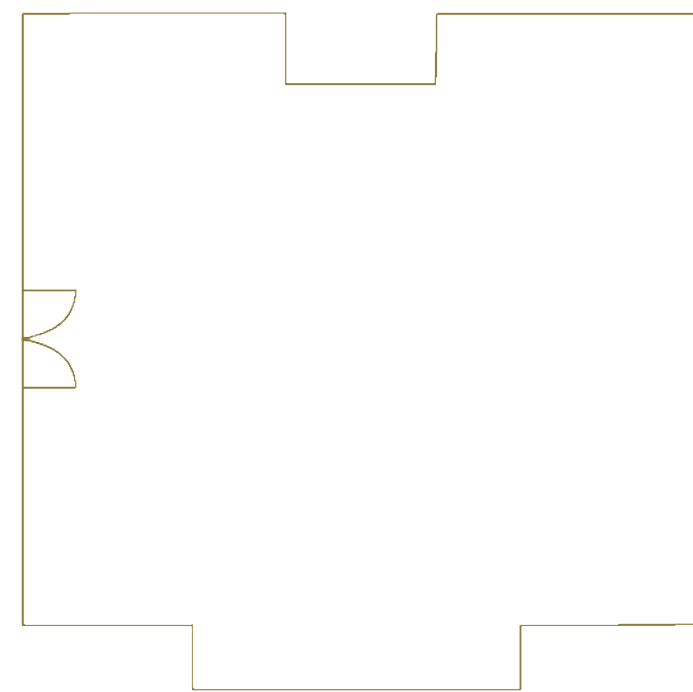
WEDDING 230

WRITING ROOM & BOWLERS' BAR

The elegantly furnished Writing Room is a beautifully proportioned and intimate setting for smaller lunches, dinners, or receptions.

Hung with famous paintings of cricketing scenes, it offers excellent views of the Ground from the north end of the Pavilion.

In close proximity to The Writing Room lies the Bowlers' Bar, an ideal space for your pre-event drinks reception



9M X 8M

CAPACITY

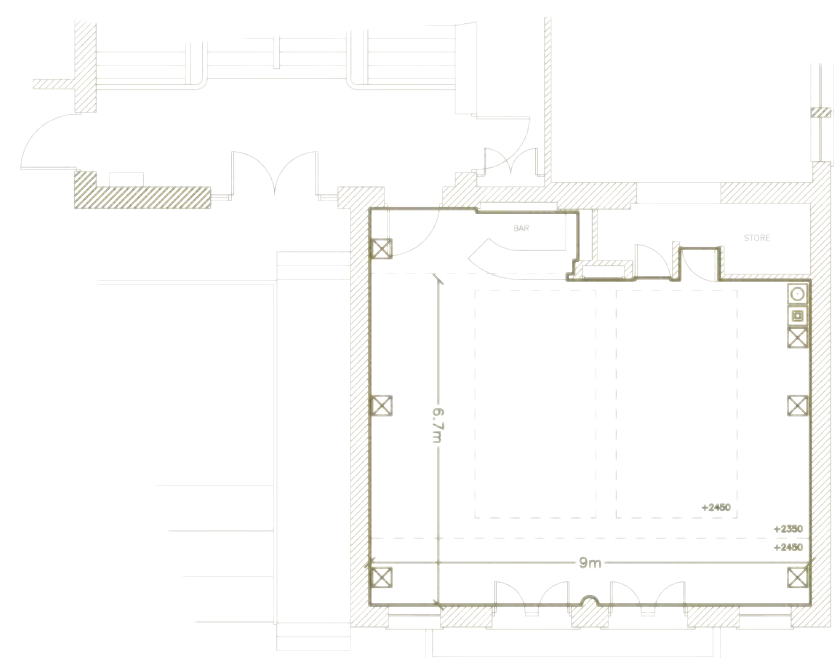
SEATED MEAL	60
LONG OVAL TABLE	26
THEATRE	45
CABARET	32
BOARDROOM	18
U-SHAPE	26
WEDDING	60

COMMITTEE DINING ROOM

The Committee Dining Room is an elegant and exquisitely furnished room on the top floor of the Pavilion, with a balcony overlooking the hallowed turf.

Decorated with portraits of former MCC Presidents, players and administrators from the MCC Museum and private collections, it is ideal for private lunches and dinner parties.

The Committee Dining Room is rife with history, making it the perfect venue for an intimate dining experience.



9M X 6.7M

CAPACITY

SEATED MEAL 54

THEATRE 64

CABARET 48

BOARDROOM 26

U-SHAPE 32

WEDDING 70





HOME DRESSING ROOM

Lord's Cricket Ground has opened the doors of the Players' Home Dressing Room as an event space at the Home of Cricket.

Located within the historic Pavilion, the Dressing Room is a completely unique venue to hire for private dining and drinks receptions. Steeped in cricketing history, the walls play host to the Honours Boards, featuring the names of past & present England cricketing legends.

Overlooking the world-famous pitch at Lord's and opposite the iconic J.P. Morgan Media Centre, this unique space can be transformed into intimate event spaces; from a private dinner for 12 guests with a six-course menu and paired wines or drinks receptions for up to 40 people.

CAPACITY

SEATED MEAL	12
-------------	----

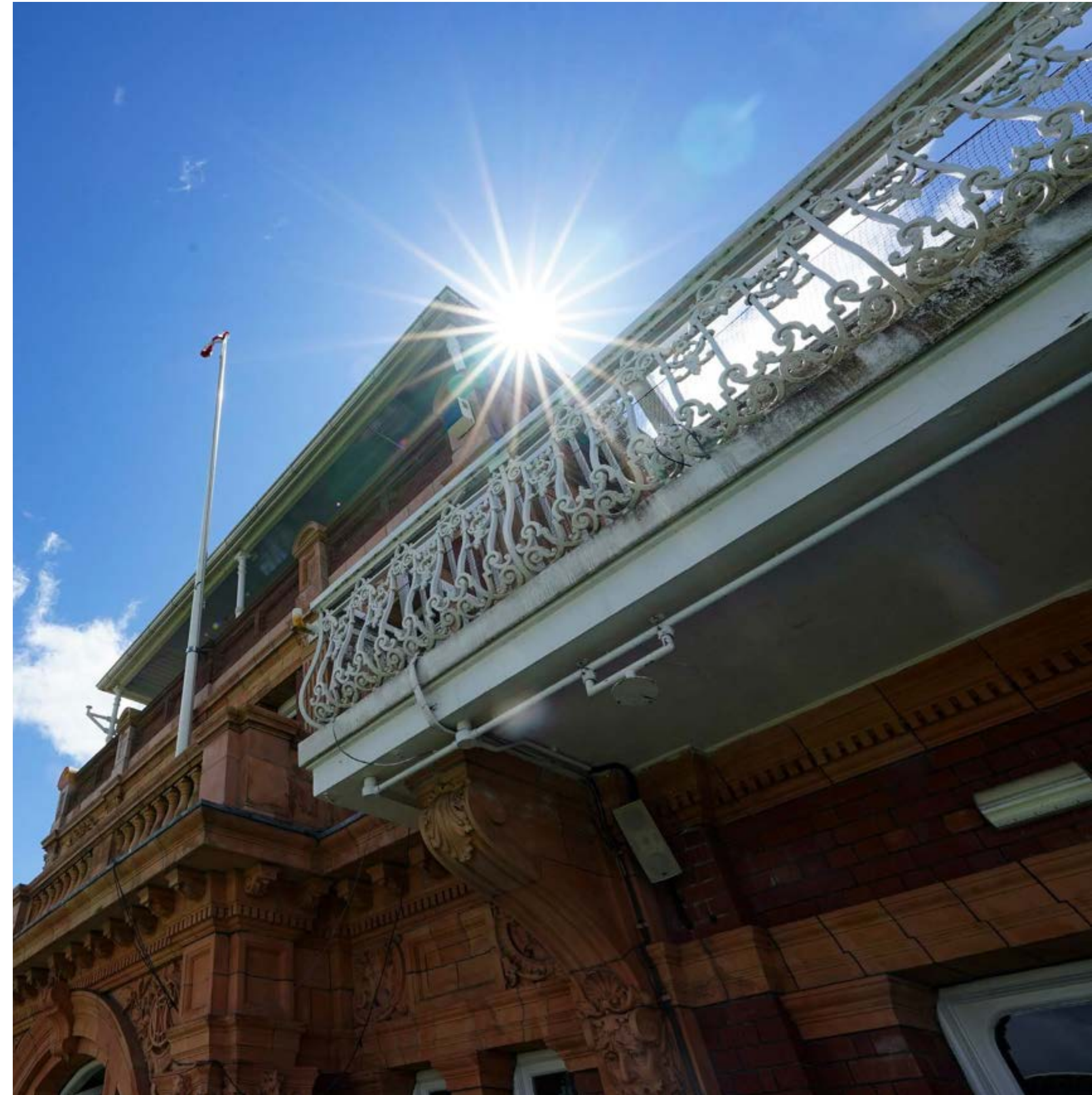
RECEPTION	40
-----------	----

AVAILABLE OCTOBER TO MARCH

MORE CHOICE AT LORD'S

Lord's isn't just a cricket venue, it is a ground with a dynamic range of additional spaces and rooms, each of which help Lord's stand out as a unique venue compared to other sporting venues across the world.

If you are after a venue with more of a modern feel, then take a look at some of the other spaces situated around the Lord's estate.



PELHAM'S

Located next to the Grade II*-listed Pavilion, the floor to ceiling glazing ensures Pelham's is flooded with natural light and offers spectacular views across the Ground.

At the heart of MCC's sustainability drive, Pelham's incorporates a rainwater recycling system, green walls, and solar and photovoltaic panels.

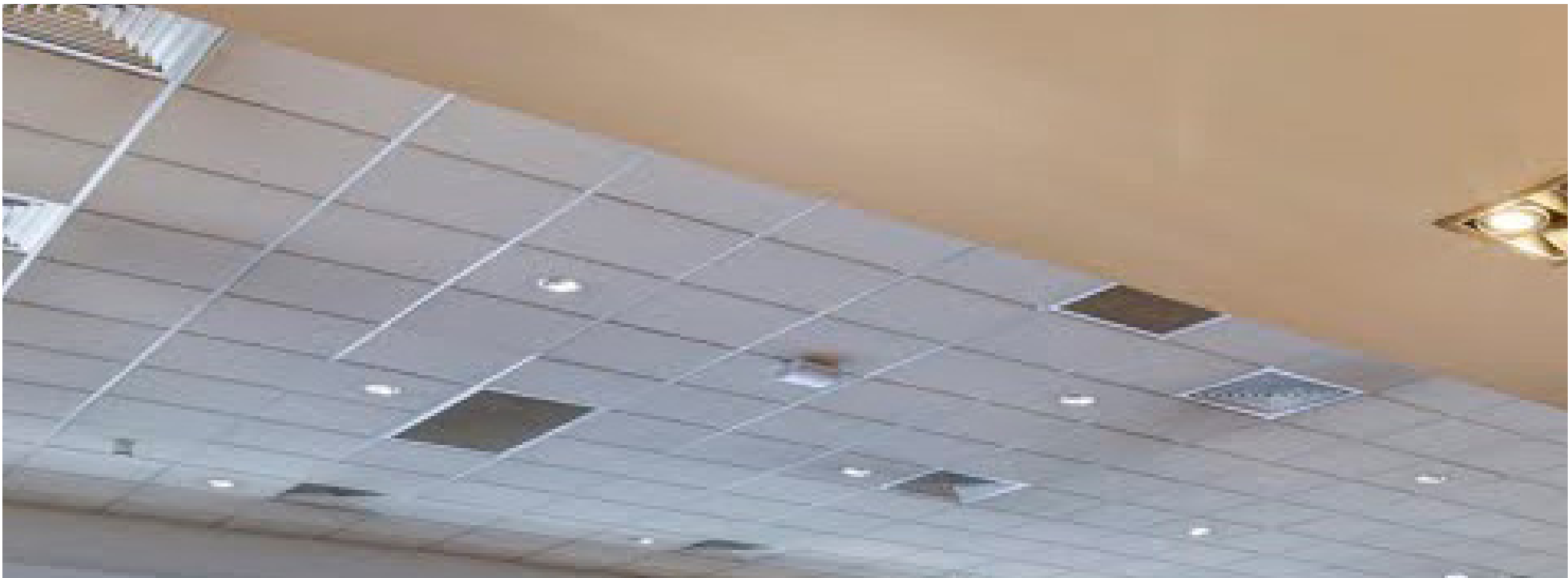
One of our most modern event spaces, Pelham's is suitable for an array of event types including conferences, receptions, and dinners.



16.3M X 9.72

CAPACITY

SEATED MEAL	136
THEATRE	136
CABARET	88
CLASSROOM	66
RECEPTION	169

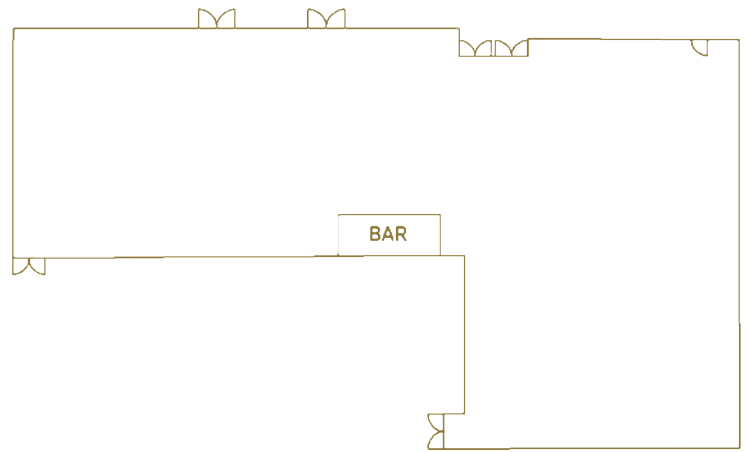


THOMAS LORD SUITE

Located next to the Grace Gate, the Thomas Lord Suite combines considerable style with ease.

With natural daylight and open-plan flexibility, it is a large and versatile venue that can suit different sizes of groups and a plethora of occasions.

The Thomas Lord Suite is suitable for a wide variety of event types including conferences, awards dinners, weddings, Bar and Bat Mitzvahs, dry hire events and Christmas parties.



GRACE SUITE-21M X 14M
HARRIS SUITE-11M X 22M

CAPACITY

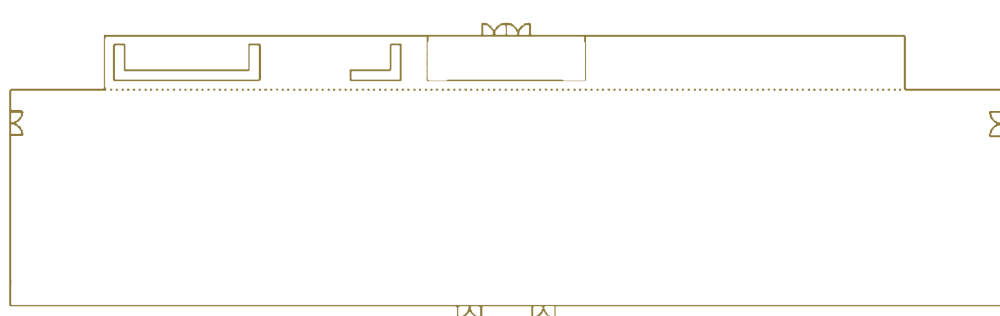
SEATED MEAL	250
THEATRE	300
CABARET	160
BOARDROOM	58
CLASSROOM	126
WEDDING	300
RECEPTION	450

NURSERY PAVILION

An expansive event space, the Nursery Pavilion overlooks the Lord's Nursery Ground, where international cricketers warm up before a match.

The space is flooded with natural light from full height windows and offers a massive 1,000 square metres of event space, which can be partitioned for maximum flexibility.

The Nursery Pavilion is perfect for any occasion with a sporting connection.



72M X 15M

CAPACITY

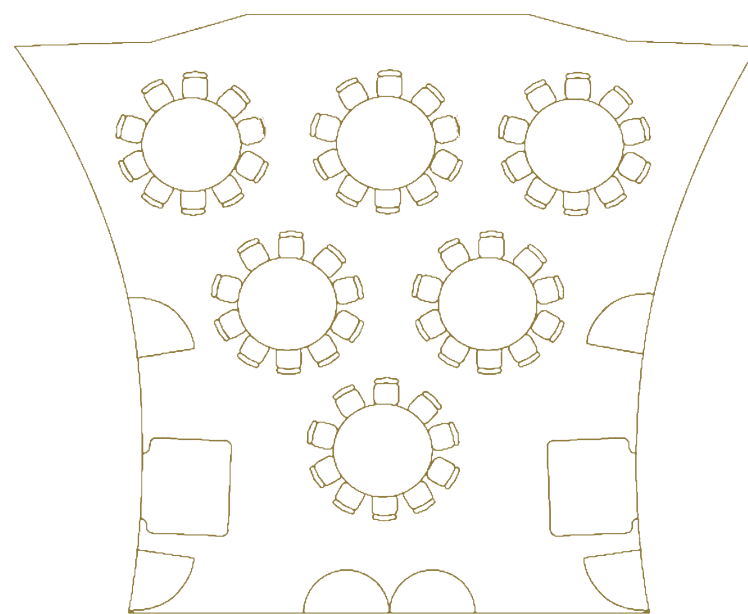
SEATED MEAL	550
THEATRE	600
CABARET	400
RECEPTION	900

J.P. MORGAN MEDIA CENTRE

The award-winning J.P. Morgan Media Centre has become an instant icon in the world of cricket, winning eight architectural awards upon its completion in 1999, including the RIBA Stirling Prize for architecture.

As the world's only single-shell aluminium building, this futuristic pod was an extraordinary engineering feat achieved through the precision of shipbuilders and offers a great opportunity for entertaining, with panoramic views of the Ground.

The J.P. Morgan Media Centre is suitable for an array of event types including seminars, receptions and dinners.



10.5M X 9.5M

CAPACITY

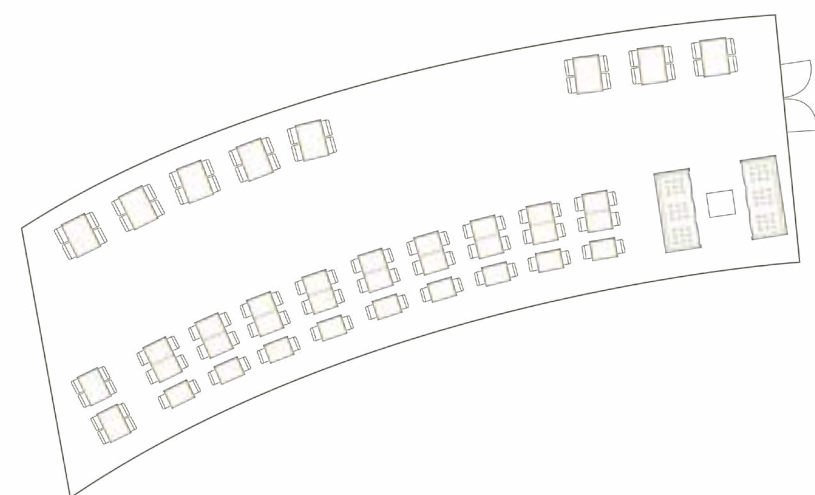
SEATED MEAL	60
CLASSROOM	70
RECEPTION	100





COMPTON'S

The recently completed Compton combines outstanding design with stunning views of the Main Ground. This suite is the perfect place for atmospheric drinks receptions with plenty of space to accommodate your guests.



40.41M X 7.08M

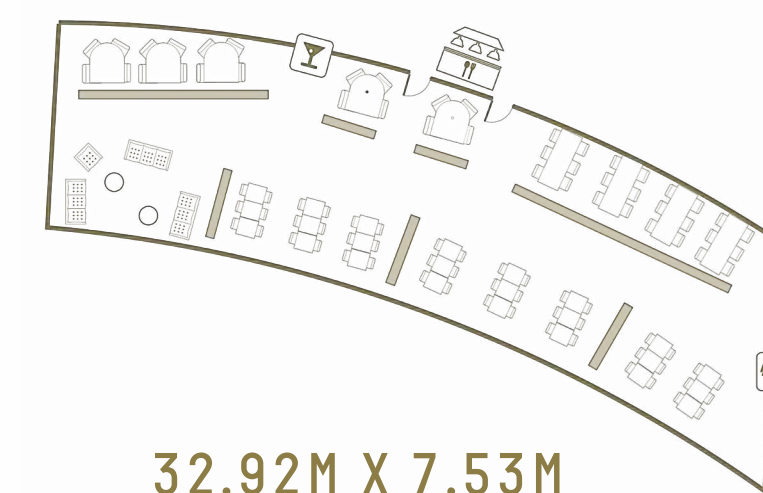
CAPACITY

RECEPTION	130
SEATED MEAL	80



THE EDRICH

Construction of The Edrich was completed in the summer of 2021. With pitch views and the iconic Pavilion as the backdrop, the Edrich Suite offers a fine dining experience for up to 60 guests. This space boasts a slightly more formal décor, the Edrich Suite is an outstanding experiential venue.



CAPACITY

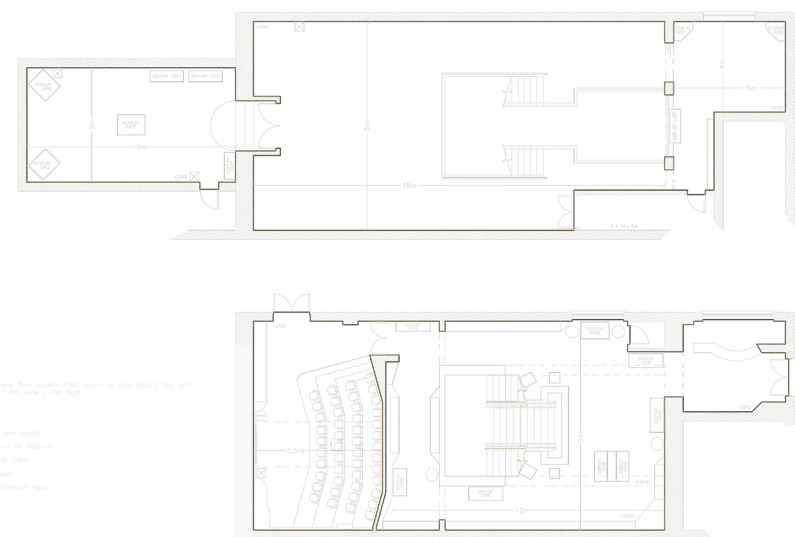
SEATED MEAL	60
-------------	----

MCC MUSEUM

The world's oldest sporting museum houses an unrivalled collection of cricketing art and memorabilia, making it a distinctly unique venue for a drinks reception.

The MCC Museum is often used in conjunction with the Long Room as a location for pre-dinner drinks and can also form an added attraction for the guests of other events held within the Ground.

Within the museum lies The Community Gallery, for an intimate screening experience for up to 35 guests.



GROUND FLOOR-9M X 12M
FIRST FLOOR-9M X 18M

CAPACITY

RECEPTION	200
-----------	-----

THEATRE	35
---------	----

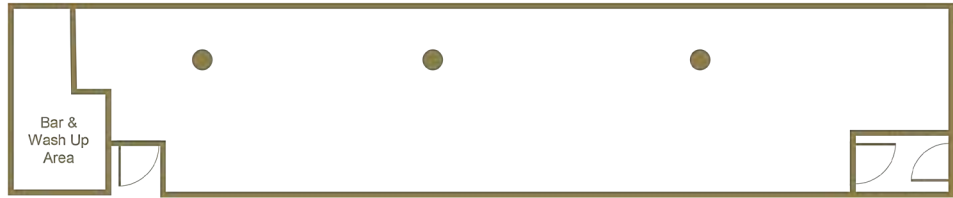


TWO SEVEN EIGHT SUITE



Located within the Grand Stand, this light and modern space offers the perfect setting for smaller meetings and conferences.

The President's Suite and Father Time Gallery are in close proximity to the Two Seven Eight Suite and offer fantastic, flexible breakout spaces for your guests



27.46M X 5.15M

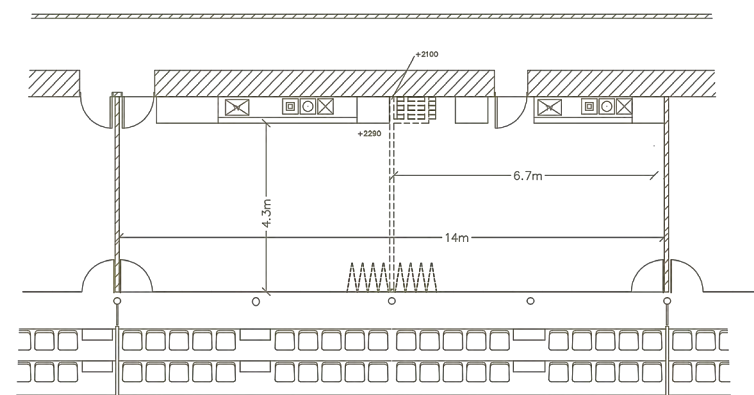
CAPACITY	
SEATED MEAL	80
THEATRE	102
CABARET	56
RECEPTION	130

AVAILABLE APRIL - SEPTEMBER

THE PRESIDENT'S SUITE

Used by the MCC President on match days, this light, contemporary space offers fabulous views of our famous pitch.

The President's Suite is a unique dining or drinks space, offering glazed doors opening into the stand for guests to enjoy an al fresco vantage point.



14M X 4.3M

CAPACITY

SEATED MEAL 48

RECEPTION 50

AVAILABLE APRIL - SEPTEMBER



TAVERN SUITES

On match days, the Tavern Suites are the private suites from which guests can sip Champagne and view cricket matches.

Throughout the rest of the year, they are an outstanding space for syndicate rooms or for smaller meetings, showcasing magnificent views from the balcony.

CAPACITY

THEATRE	30
---------	----

CABARET	16
---------	----

BOARDROOM	16
-----------	----

AVAILABLE APRIL – SEPTEMBER

7.5M X 4.3M



CENTURIONS ROOF TERRACE

With its 'tented' roof, the Centurions Roof Terrace has a nostalgic feel, recalling the marquees of village cricket, yet with all the glamour of Lord's.

Suitable for large summer parties and receptions with a panoramic view of the Main Ground.

CAPACITY

RECEPTION	350
-----------	-----

AVAILABLE APRIL - SEPTEMBER





PAVILION ROOF TERRACE

Running the whole length of the Pavilion, the Roof Terrace is a beautiful and airy space with a balcony that provides remarkable views of the Ground. The Pavilion Roof Terrace is an idyllic location for your summer event.

CAPACITY

RECEPTION	200
-----------	-----

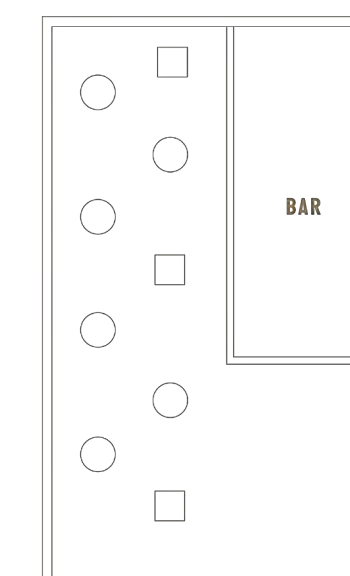
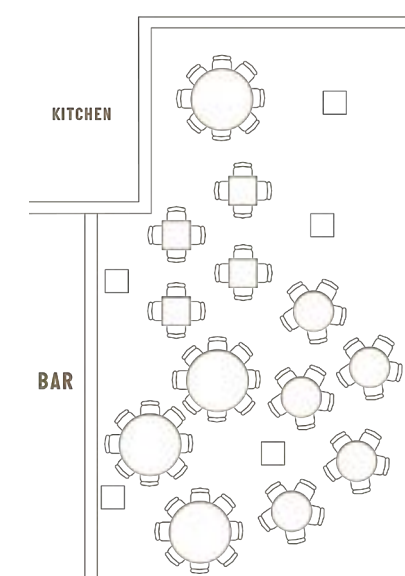
AVAILABLE APRIL – SEPTEMBER





HARRIS GARDEN

This charming rose garden is a tranquil oasis in the heart of London and forms a lovely alfresco venue for summer parties and receptions.



CAPACITY	
RECEPTION	200

PACKAGES AND MENUS

With an award-winning experienced internal Catering team that work closely alongside the events department, our team are well equipped to cater for any Events, dietary requirements or bespoke menus.

We also offer Summer Party, Day Delegate, Drinks, Wedding, Winter Reception, Charity and Christmas Party Packages which offer an all-encompassing option for your event.

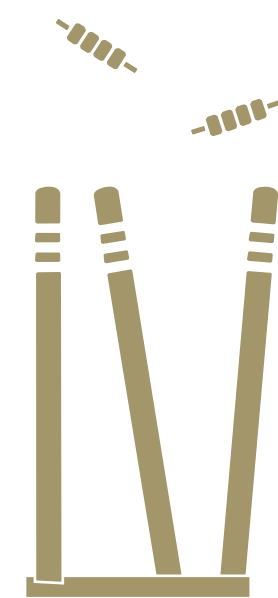


LORD'S EXPERIENCE



Tour of Lord's - If it is of interest, we can accommodate your guests with a tour of the Ground which lasts around 45 minutes, providing your guests with an opportunity to go behind the scenes at the Home of Cricket and explore some of the most famous sights in sport. The tour usually includes the following dependant on availability; the famous Honours Boards, the Dressing Rooms, the Long Room, the J.P Morgan Media Centre and the famous Ashes Urn and Prudential Trophy.

Lord's Indoor Cricket Centre - Fancy a post conference 'knock about' at the Lord's Indoor Cricket Centre? Whether it's learning the basics, sharpening your existing cricketing skills or simply enjoying a mini-indoor match, then we will have the right package to suit you. Lord's Indoor Cricket Centre is London's premier indoor cricket destination for groups to be coached of all abilities and ages. Sessions last for one hour and can be tailored to suit your numbers.



There is an also an on-site Lord's shop that includes England, Middlesex and London Spirit replica kit and Lord's souvenirs including mugs, hats and stationery. These could be the perfect gift for guests of your event.



CONTACT US

To discuss your specific requirements, find out more about our venues, or to book, please contact the E&E team via events@mcc.org.uk or call **020 7616 8501**.
www.lord's.org

